



ILKLEY GRAMMAR SCHOOL

A MOORLANDS LEARNING TRUST SCHOOL

The IGS Photobook

Name:	
Form Group:	
Form room:	



Getting to know IGS and using your photobook

Hello and welcome to Ilkley Grammar School. This first edition photobook will help you understand some basics of the exceptional school you are joining!

We look forward to helping you *'Growing in wisdom and stature'*, our Latin motto visible encircling the crest you will wear with PRIDE every day



Contents

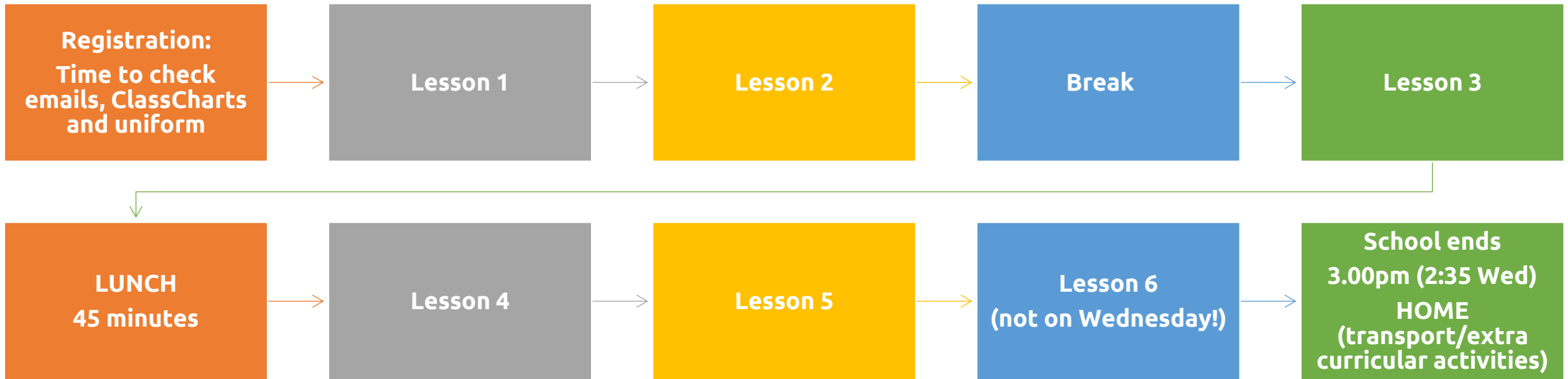
- Page 4: The school day
- Page 5: Proud to be an IGS student in Your community
- Page 6: School Maps
- Page 7: School Maps
- Page 8: Our School PRIDE Values
- Page 9: Our 8 strands of Personal Development
- Page 10: Entrance/Exit points
- Page 11: Main Entrances
- Page 12: Dining and social spaces
- Page 13: School Buildings
- Page 14: Other points of interest
- Page 15: Other points of interest
- Page 16: PE and Sport
- Page 17: PE Kit expectations
- Page 18: Toilet locations
- Page 19: Water fill stations



What will a day look like?

We have a two week timetable (Week A and Week B) and a slightly earlier finish (2.35pm) on Wednesday

First bell allowing you into school: for 8.20am (gates shut at 8.25am)



Proud to be an IGS student in Your community

Pride in the IGS community

- **Be kind** to others
- **Litter** needs to be put in the bin
- Move **quietly** and **respectfully** around the site
- No **offensive language** or **gestures**
- Show **politeness & courtesy** to others (Holding doors etc)

Pride in your local community

- Be courteous to local residents when coming/returning to IGS from home
- Think about how your behaviour in groups on **buses and trains** affects others
- **You represent IGS whenever you are in our uniform**

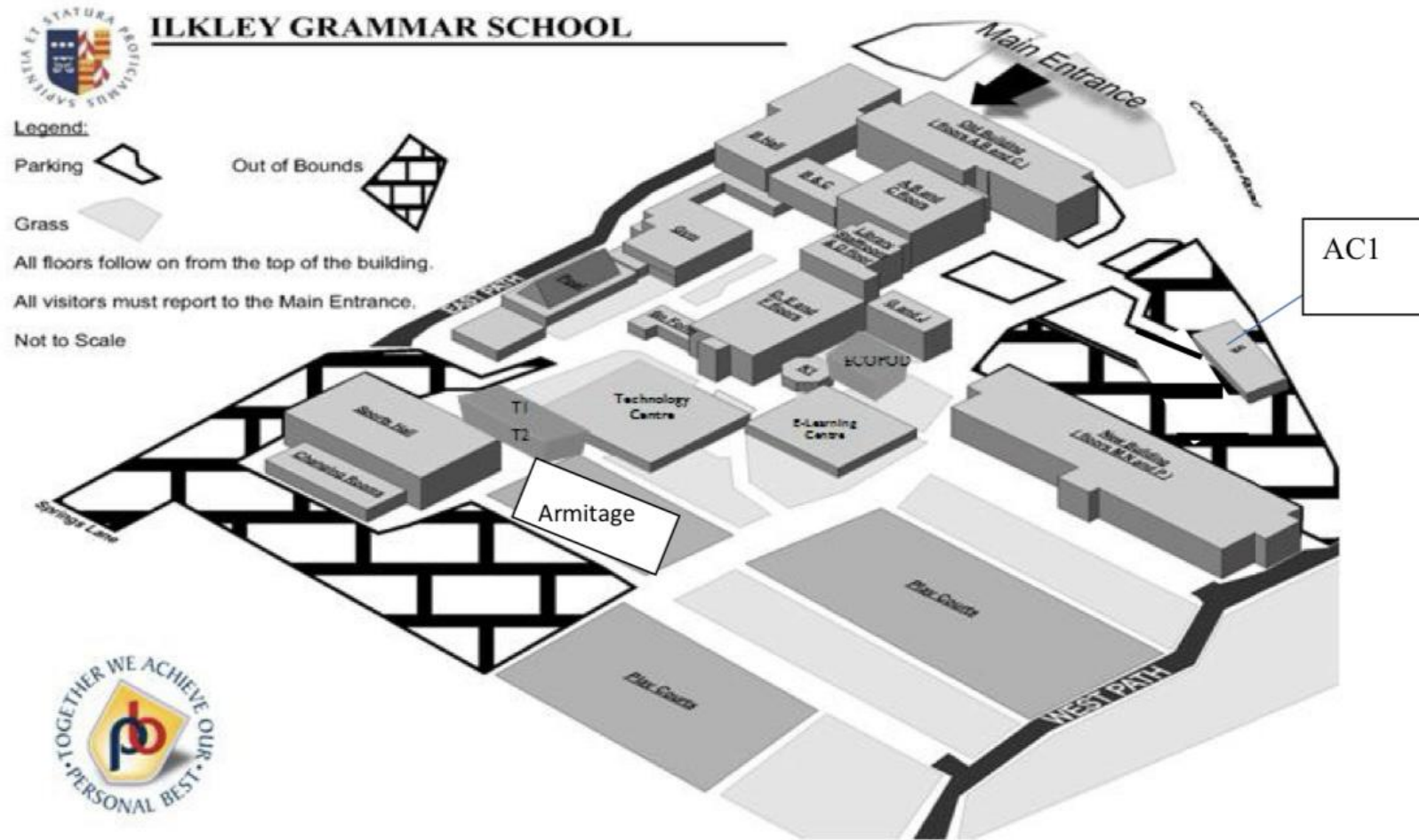
Toilets

- **No congregating in toilets** (This can be intimidating for others!)
- **Never** go into a cubicle with another student or students
- **Vaping will be taken extremely seriously** at IGS and will result in a series of sanctions

Thank you for demonstrating your **Personal Best**

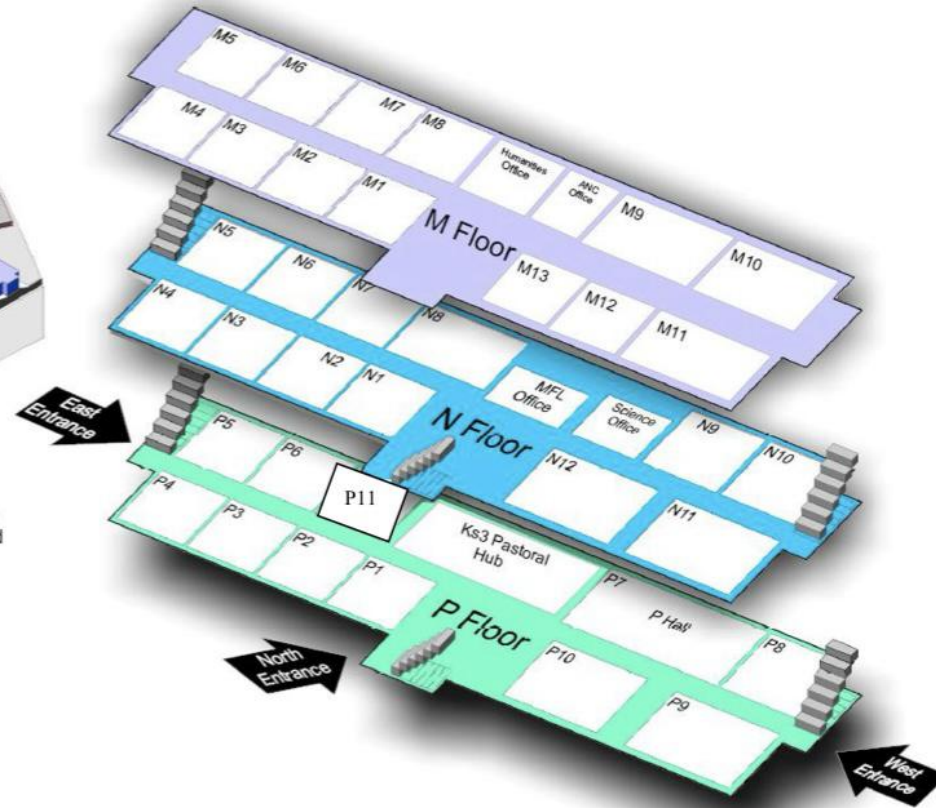
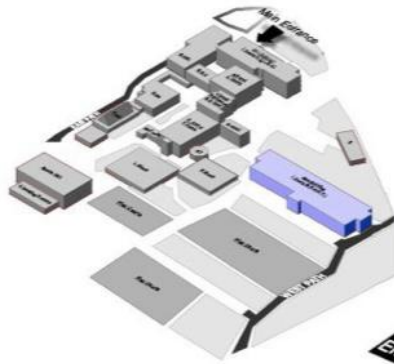


School maps



School maps

Bronte Building

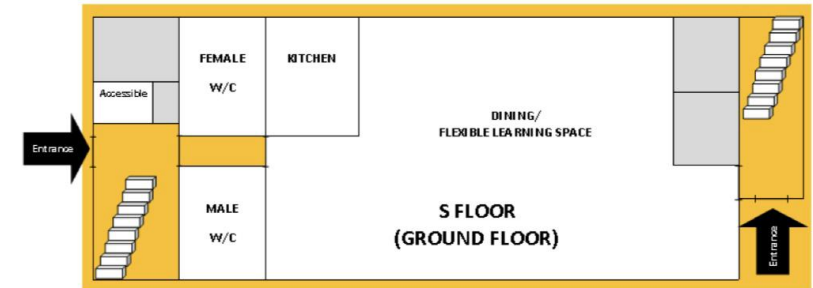
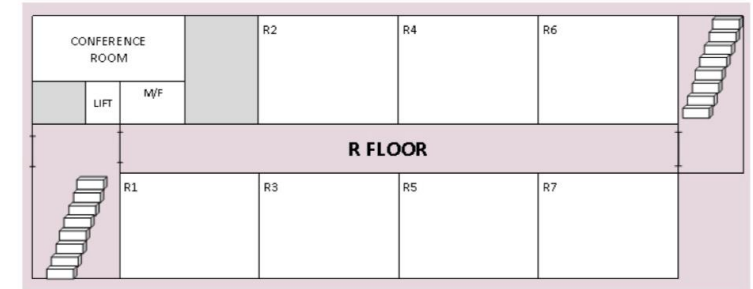
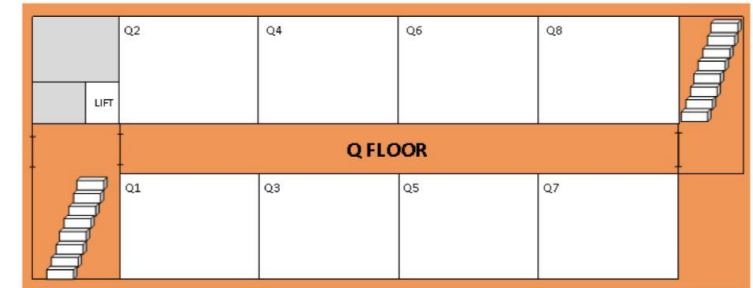


To be safe and ease congestion please walk on the left side of the corridors and paths.

At peak times use the North and West Entrances for rooms 1, 8 and 9 to 12.

Please do not enter the corridors until 8.20am in the morning.

ARMITAGE BUILDING



Q1-Q3 = Business
R1 - R7 and Q4-Q8 = English

Our school pride values



Our 8 strands of Personal Development

The 8 Personal Development strands at IGS



ACTIVE CITIZENSHIP
& COMMUNITY



LEADERSHIP
& INFLUENCE



SCHOLARSHIP
& CURIOSITY



NEXT STEPS
& CAREERS



SPORT, INTERESTS
& CULTURE



HEALTH &
WELLBEING




RESPECT, EQUALITY
& DIVERSITY







DISCOVERY
& ADVENTURE

Entrance/Exit points

1	Cowpasture road pedestrian entrance/exit and car EXIT
2	Cowpasture road east pedestrian entrance and car ENTRANCE ONLY
3	Springs lane pedestrian entrance/exit
4	Springs lane Sports hall CAR ONLY entrance/exit, NO PEDESTRIANS 
5	IGS Main reception entrance and IGS late student arrivals (After gates closed)



Main entrances

IGS Main entrance/reception (External access)	Student reception entrance (access from within school)
	
Late student entrance	Springs lane pedestrian gate
	

Dining and social spaces

B Hall (Assemblies and dining)



Courtyard Cafe



Armitage Cafe



Y7 Court



School buildings

Bronte Building (P, M and N floors)



Armitage Building (Q and R floors)







Marshall Building (A, B, C, D, E and F floors)





K Block (Computing, Media) and L Block (Design and Technology)



Other locations of interest

The Year 7 Hub (P floor in Bronte building)	Lost property
	
Library	Bike storage (Behind Armitage)
 	

Other locations of interest

IT office	East path
	

PE and Sport

Gym



Sports hall (Girls on left side by Armitage, boys on right)



Field lesson meeting points (Girls = gym, boys = shelter)



Swimming pool



PE kit expectations

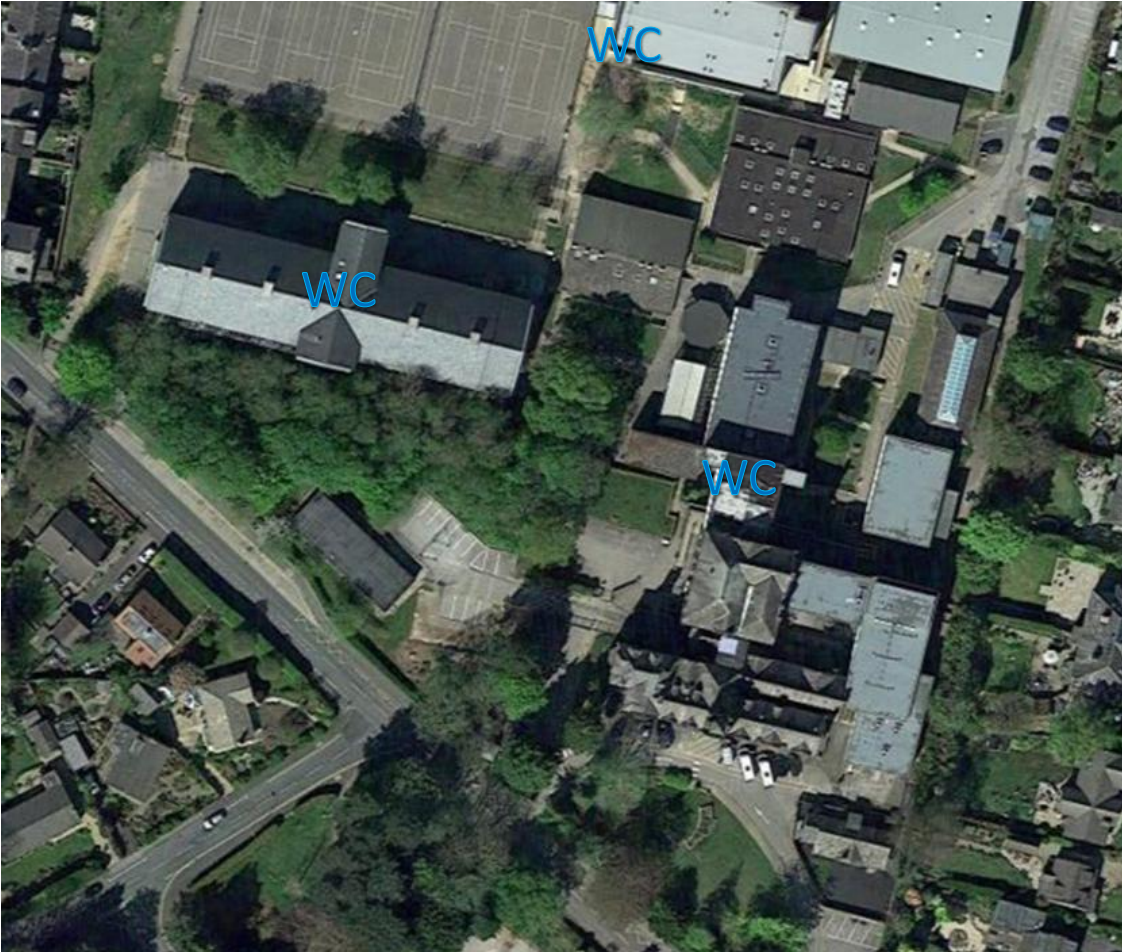
Compulsory PE Kit 2024 onwards:

- White unisex polo shirt or fitted polo shirt with school logo
 - Black long/short sleeve reversable rugby shirt with school badge (girls don't need to buy this)
 - Black unisex shorts or skort
 - Long black games socks
 - White ankle socks
 - Sports trainers
 - Football/rugby (plastic studded) boots for all
 - Plain swim shorts or swimming costume
 - Goggles and a towel for swimming
 - Optional PE Kit
-
- Grey hoodie with school logo - no other brand is acceptable
 - Plain black performance sports leggings
 - Plain black tracksuit bottoms (no large logo or coloured stripes)
 - Black skins thermal top
 - In addition, the following protective equipment is strongly recommended: shin pads and a gum-shield.
 - Old white polo shirt

Uniform website link <https://www.ilkleygrammarschool.com/parents/uniform/>



Toilet locations



P Floor, N Floor, in Bronte
Armitage
D Floor

Water fountains

- Bronte P, M, N Floor
- A floor by reception
- L Block
- D Floor
- Outside Armitage cafe

