

# Welcome

## Ilkley Grammar School Post-16 Open Evening 2024-25

Carly Purnell, Head Teacher  
Alex Fox, Assistant Headteacher: Director of Post-16



ILKLEY GRAMMAR SCHOOL

A MOORLANDS LEARNING TRUST ACADEMY

# Our Vision

Our vision at Ilkley Grammar School is to provide a **world-class, inclusive education** and exceptional opportunities which will enrich us both individually and collectively as a community. We will inspire, support and challenge each other to achieve our **Personal Best** so that we all **grow in wisdom and stature**. By modelling our **Personal Best values** and championing equality and diversity, we will make a **positive difference** to our own lives and the lives of others and will be empowered to **lead and influence positive change** on a local, regional, national and global scale.

Our vision is underpinned by our **Personal Best Values** which are:  
**RESPECT, COURAGE, RESPONSIBILITY, KINDNESS, RESILIENCE AND PRIDE**



## ILKLEY GRAMMAR SCHOOL

A MOORLANDS LEARNING TRUST ACADEMY



# Post-16 curriculum offer and entry requirements



ILKLEY GRAMMAR SCHOOL

A MOORLANDS LEARNING TRUST ACADEMY

# Basic facts:

Entry requirements: **5x grade 4, including English and Maths**  
Subject specific entry requirements: **on the Post-16 section of our updated website**



The screenshot shows the Ilkley Grammar School website. At the top is the school's crest and name. Below this is a navigation bar with links: OUR SCHOOL, PARENTS, STUDENTS, POST-16 (highlighted), IGS FUND, NEWS, CONTACT, STAFF, and COMMUNITY. A search bar is also present. The main banner features a group of diverse students smiling, with the text 'POST-16' overlaid. Below the banner, a breadcrumb trail reads 'You are here: Home > Post-16'. On the left, a sidebar lists four menu items: 1. WELCOME TO POST-16, 2. KEY ADMISSIONS INFORMATION, 3. FINANCIAL SUPPORT, and 4. RESULTS & DESTINATIONS. The main content area has the heading 'WELCOME TO POST-16 AT IGS' followed by a paragraph: 'Post-16 is the culmination of the whole school experience and we pride ourselves on the personalised support that we offer our students during this exciting and challenging stage of their life.' At the bottom, there are two logos: 'TOGETHER WE ACHIEVE OUR PERSONAL BEST' on the left and the 'RED KITE ALLIANCE' logo on the right. A decorative bar with yellow, red, and blue segments is at the very bottom.

ILKLEY GRAMMAR SCHOOL

Follow us   

Search the website... 

OUR SCHOOL PARENTS STUDENTS **POST-16** IGS FUND NEWS CONTACT STAFF COMMUNITY

**POST-16**

You are here: Home > Post-16

1. WELCOME TO POST-16

2. KEY ADMISSIONS INFORMATION

3. FINANCIAL SUPPORT

4. RESULTS & DESTINATIONS

**WELCOME TO POST-16 AT IGS**

Post-16 is the culmination of the whole school experience and we pride ourselves on the personalised support that we offer our students during this exciting and challenging stage of their life.

TOGETHER WE ACHIEVE OUR PERSONAL BEST

RED KITE ALLIANCE



**For  
2025  
entry**

# Post-16 pathways at IGS

- **3 A Levels + Enrichment (EPQ, WEx, Sports Leaders, Core Maths, Arts Award)**- Focus on 3 core subjects and add to your CV.
- **3 A Levels subjects + 1 AS** – AS grade at the end of Y12 on your apprenticeship application or your UCAS– Gives you flexibility.
- **REMEMBER** – not all subjects offer AS – CHECK our website
- **1 AAQ + 2 A Level + Enrichment (EPQ, WEx, Sports Leaders)** Best suited to those with an average of grade 5 at GCSE. Regular coursework assessment and fewer exams.
- **4 A Level subjects** – only recommended for students averaging around a grade 7 at GCSE and considering a highly competitive degree course / or degree level apprenticeship.



# 40 Subjects offered

A broad range of subjects including AAQ and vocational options

Some subjects you won't have seen before

Biology, IT AAQ, Business, Chemistry, Computer Science, Core Maths, Criminology\*, Economics, English Language, English Lit, EPQ (Extended Project), Fashion & Textiles, Fine Art, French, Further Maths, Geography, Health and Social Care AAQ, History, Maths, Media studies, Music, BTEC Sport, Philosophy, Photography, PE, Physics, Politics, Product Design, Psychology, Sociology, Spanish, Theatre Studies, Law, Classical Civilisation, BTEC Business, Arts Award, Applied Science AAQ, Early Childhood Development AAQ

# New Subjects

- AAQ Health and Social Care
- AAQ Applied Science
- AAQ IT
- AAQ Early Childhood Development
- Arts Award Gold



# POST-16 STUDENTS

You are here: [Home](#) > [Post-16 Students](#) > [Subject Information](#)

[WELCOME TO POST-16](#)

[ADMISSIONS  
INFORMATION](#)

[FINANCIAL SUPPORT](#)

[RESULTS &  
DESTINATIONS](#)

[DAILY TIMETABLE](#)

[CURRICULUM  
OVERVIEWS](#)

**[SUBJECT INFORMATION](#)**

[INDEPENDENT STUDY &  
EARNED AUTONOMY](#)

[PERSONAL  
DEVELOPMENT &  
ENRICHMENT](#)

[PASTORAL SUPPORT &  
GUIDANCE](#)

[MOBILE DEVICES &  
COMMUNICATION](#)

[DRESS CODE,  
EXPECTATIONS,  
REWARDS & SANCTIONS](#)

[ATTENDANCE,  
PUNCTUALITY & TRAVEL](#)

[ASSESSMENT,  
REPORTING & ACADEMIC  
SUPPORT](#)

[POST-18 PATHWAYS &  
WORK EXPERIENCE](#)

[FACILITIES & STUDY  
SPACES](#)

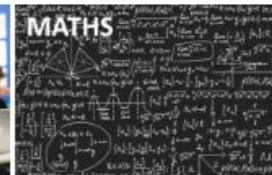
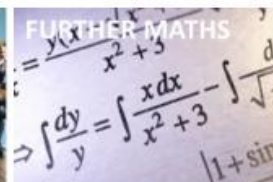
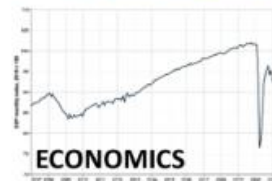
[TRIPS & VISITS](#)

## SUBJECT INFORMATION

### A-Level & BTEC 2025/26

Click [HERE](#) to download the entry requirements for each course.

Click on the subject to find out more:



STATURA



# A Tradition of Achievement

## Outstanding Attainment and Progress

### IGS 2023-24

Average A Level grade: B

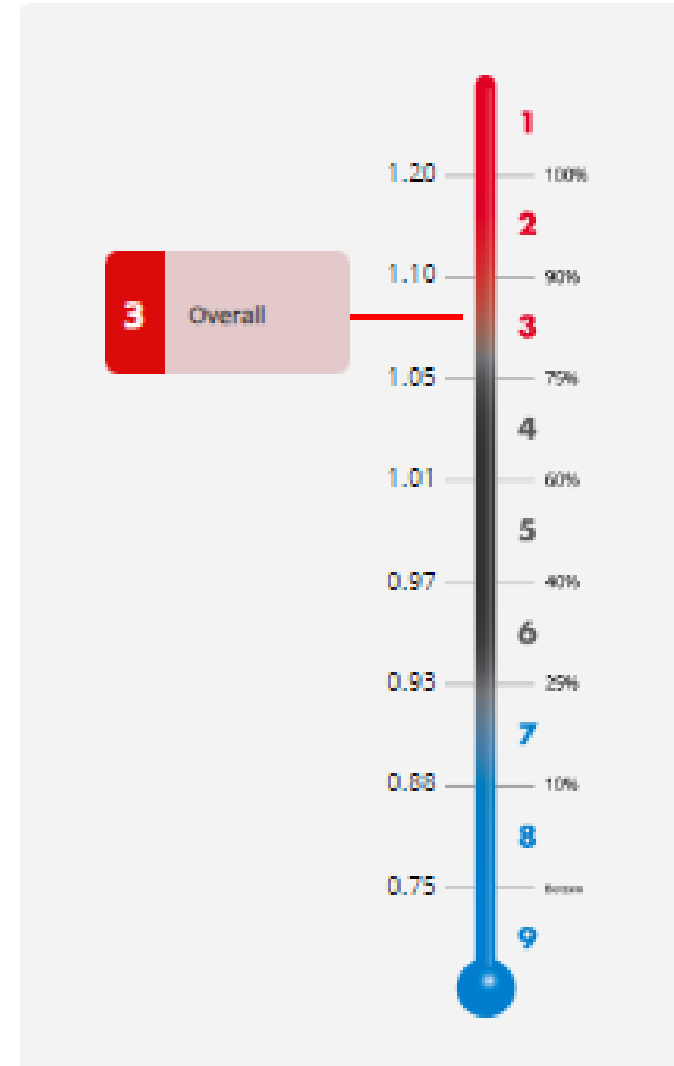
Average vocational grade: Distinction -

### IGS 2022-23

Best 3 APS: top 7% nationally

A level APS: top 7% nationally

	IGS: 2023/24 (national)
Students in scope	254
A*%	12.4% (9.3%)
A* - A%	35.2% (27.6)
A* - B%	65.4% (53.6)
A* - C%	84.8% (76.0)
Pass rate%	98.7% (97.1)
%AAB in 2+ FAC subjects	21.0%
Best 3 A-Level	39.3(B)
APS per A level entry	38.3 (B)
L3VA	TBC



Our ALPS grade 3 in 2024 places IGS in the top 25% of schools nationally for progress at A level.

### Value Added

2019 Level 3 Value Added Score = +0.15

Our 2019 results (the last time performance tables were published) placed IGS in the top 17% of all schools.



# Ilkley Grammar School

Cowpasture Road, Ilkley, West Yorkshire LS29 8TR

## Inspection dates

29–30 March 2017

### Overall effectiveness

**Outstanding**

Effectiveness of leadership and management

**Outstanding**

Quality of teaching, learning and assessment

**Outstanding**

Personal development, behaviour and welfare

**Outstanding**

Outcomes for pupils

**Outstanding**

16 to 19 study programmes

**Outstanding**

Overall effectiveness at previous inspection

Not previously inspected

## Summary of key findings for parents and pupils

**This is an outstanding school**

**“Students make outstanding progress from their starting points across a wide range of subjects. Teaching over time is outstanding”**

**Ofsted**



*“Post-16 students feel **fully integrated** and valued within the school community.”*

Red Kite Review 2019

*“A real strength of the school is the range of leadership roles available to pupils of all ages. These are iLeaders. Pupils think these opportunities are very good.”*

Red Kite Review 2023

*“Post-16 students say they receive ‘great teaching’ and very informative careers advice and guidance.”*

Red Kite Review 2019



**“Students’ attitudes to learning are excellent. They are self-assured, punctual and ambitious. They show high levels of independence and cooperate well with each other and their teachers. They work hard and produce high-quality work over time”**



**Ofsted**



# What Do our Parents/Carers Say?

May we thank you and your colleagues at IGS for the incredible support and teaching experienced by our daughter during her time in sixth form. From our first encounter with IGS... throughout the past two years, **the professionalism, kindness and care** that {our daughter} has benefitted from has been outstanding. We also appreciate the other staff, teaching and non-teaching, with whom we have not had contact but **who contribute to creating the brilliant and remarkable environment at IGS.** IGS has been such a positive experience for our family. Thank you.

**Received August 24**

The Post-16 Team was unbelievable. ***I couldn't quite comprehend how much support and guidance was available to every student.*** We had no idea how the process of university applications in the UK was handled. Every step was new to us and yet we didn't once feel that we didn't know what the next step was and the expectations thereof.

To each member of your team, we want to express our thanks and gratitude for all the dedication and hard work that goes into producing top results...thank you for helping him and giving him the confidence to achieve the results he achieved.

**July 24**

We wanted to take this opportunity to thank you all for the help and support you have given [our child] during his time at Ilkley Grammar School.

He has absolutely loved his time at the school and the experience and knowledge he has gained over the 7 years has given him a great foundation for the future.

**July 23**



# Why IGS?

- Growing in wisdom and stature
- Personal Best- A tradition of achievement
- Web of experiences- Unparalleled experience and leadership opportunities



ILKLEY GRAMMAR SCHOOL

A MOORLANDS LEARNING TRUST ACADEMY

# What is it like to study at IGS?

- High support, high challenge
- Lots to get involved with- you will not get bored
- Unparalleled care and support





# Growing in Wisdom and Stature

---

Timetabled enrichment- EPQ, Work Experience, Core Maths, Arts Award, Sports Leaders

---

Supervised and Directed Study

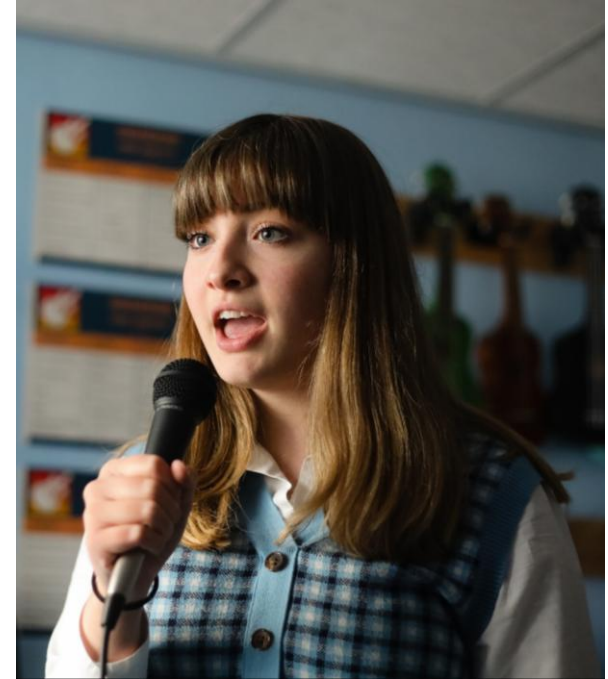
---

PSHE- once a cycle

---

Tutorial and Personal Best Time

# Personal Development and Leadership in Post-16



ILKLEY GRAMMAR SCHOOL

A MOORLANDS LEARNING TRUST ACADEMY



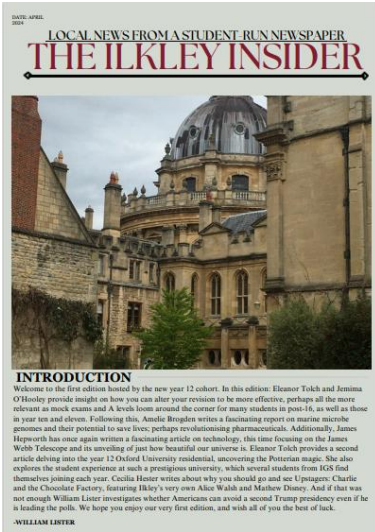
# Alignment of Personal Development with the new IGS Values



We will  
demonstrate **and**  
develop our  
school values  
as we build up  
Personal  
Development  
knowledge, skills  
and experiences



***Growing in wisdom and stature***



 <p>ACTIVE CITIZENSHIP &amp; COMMUNITY</p>	<p>£14,210 raised for charity last year</p>	 <p>INVOLVEMENT &amp; ADVENTURE</p>	<p>+2,000 items donated to local food banks</p>
<p>96 extra- curricular clubs and activities on offer</p>	 <p>HEALTH &amp; WELLBEING</p>	<p>15 Performing Arts events</p>	 <p>LEADERSHIP &amp; INFLUENCE</p>
 <p>WORK, ACTION &amp; CAREERS</p>	<p>32 various iLeader opportunities</p>	 <p>MORALE, EQUALITY &amp; DIVERSITY</p>	<p>50 students awarded SSAT Gold Accreditation for Student Leadership</p>
<p>57 separate trips/visits</p> <p>8 overseas trips</p>	 <p>SCHOLARSHIP &amp; CHALLENGE</p>	<p>+70 students participating in the Duke of Edinburgh awards</p>	 <p>SPORT, INTERESTS &amp; CULTURE</p>

[illegible]

## POST-16 STUDENT LEADERSHIP TEAM 2024-25



**HEAD STUDENT**  
**Lois Skelton**  
**Active Citizenship/  
RED/ Events**



**HEAD STUDENT**  
**Justin Derla**  
**Mental Health and  
Wellbeing/ Events**



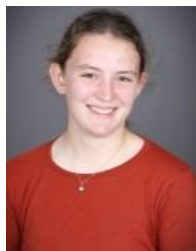
**HEAD STUDENT**  
**Lottie Johnson**  
**Scholarship and Curiosity/  
Operations**



## DEPUTY HEAD STUDENTS



**DEPUTY HEAD  
STUDENT Year 7**  
**Millie Smith**  
**R.E.D  
Officer**



**DEPUTY HEAD  
STUDENT Year 8**  
**Isobel Tate-Smith**  
**Eco & Sustainability  
Active citizenship  
Officer**



**DEPUTY HEAD  
STUDENT year 9**  
**James Hepworth**  
**Health, Wellbeing  
and Operations  
Officer**



**DEPUTY HEAD  
STUDENT year 10**  
**Rachel Joyce**  
**Academic  
Mentoring Officer  
(Scholarship and  
Curiosity)**



**DEPUTY HEAD  
STUDENT Year 11**  
**Charlie Wilson**  
**Events and  
Operations Officer  
(Sports, Interests  
and Culture)**



**DEPUTY HEAD  
STUDENT Year 12**  
**Winnie Shooter**  
**Active citizenship  
officer**



**DEPUTY HEAD  
STUDENT Year 12**  
**Mia De Luca**  
**Academic  
Mentoring Officer  
(Scholarship and  
Curiosity)**



**DEPUTY HEAD  
STUDENT Year 13**  
**Ava Jones**  
**Academic  
Mentoring Officer  
(Scholarship and  
Curiosity)**

## POST-16 STUDENT LEADERSHIP AMBASSADORS

### STRANDS:

- **HEALTH & WELLBEING**
- **SCHOLARSHIP & CURIOSITY (inc.ACADEMIC MENTORING)**
- **ACTIVE CITIZENSHIP (inc. ECO & SUSTAINABILITY)**
- **RESPECT,EQUALITY & DIVERSITY – R.E.D**
- **OPERATIONS & SOCIAL EVENTS**
- **SPORT,INTERESTS & CULTURE**

# This is what it actually looks like!



# Next Steps Programme

## Next Steps Week 17-21 June 2024

### Monday *Seeing New Horizons*

1. Preparation with form tutors
2. Launch Event
3. Non-Uni Pathways: Apprenticeships
4. UCAS Process – Uni of Sheffield
5. Amazing Apprenticeships
6. Discover Degrees – Newcastle Uni
7. Students start UCAS applications
8. CV Writing Session
9. Personal Statements - Manchester Uni
10. Degree Apprenticeships – Uni of Kent
11. Creative Next Steps
12. Humanities Next Steps - Manchester Uni

### Tuesday *Finding your way*

13. Review with form tutors
14. Using Unifrog for Next Steps Research (CV and PS)
15. Students work in Unifrog
16. Employability and Career Progression – Peter Shelley, commercial and academic publisher and business owner
17. Medics, Dentists, Vets: What is it actually like and how to prepare – Newcastle Uni
18. Managing and building a business – Peter Shelley
19. Apprenticeship Top Tips – Bradford College and IGS alumni
20. Opportunities in Football Business – UCFB
21. Careers in the Music Industry - Point Blank Music
22. Competitive Universities – IGS Alumni
23. Take control of your career journey - Manager of Clip n Climb
24. Scottish Universities: Differences to English universities

25. Digital and IT Apprenticeships – Estio
26. **Parent's Information Evening** – Applying to Higher Education – Leeds Uni

### Wednesday *Refine your focus*

27. Review with form tutors
28. Apprenticeship Top Tips – IGS alumni
29. Opportunities for studying abroad – A Star Future
30. Apprenticeships: Where to find and how to apply
31. Gap Years: Why? What? How? – Project Trust and IGS Alumni
32. Applying to Competitive Courses – Liverpool Uni
33. Careers in Law – Uni of Law and other experts
34. Applying to Health Care Courses – Bradford Uni
35. Apply+ and Oxbridge: Personal Statements – Brasenose College, Oxford and IGS alumni
36. Vocational Degrees and Degree Apprenticeships – Uni College Birmingham
37. How Student Finance Works – Liverpool Uni
38. Careers in television and media – BBC/Sky
39. Applying for medicine: The inside track – IGS alumni
40. Foundation courses and alternative pathways into higher education – Uni of Bradford
41. Maths Entrance Exams
42. Building a Business – Laura Hargraves

### Thursday *UCAS Discovery Day*

43. Review with form tutors
44. UCAS Discovery Day Event – Leeds Beckett Un

### Friday *Apply to yourself*

45. Review with form tutors
46. The Good, The Bad, and The Ugly: What should you not do in interviews – Russell Kennedy
47. Choosing a course and uni – Sheffield Uni
48. Rural Solutions: Careers as consultants, architects, planners – Duncan Hartley, Rural Solutions
49. Non-Uni Pathways: Career Journey Without a Degree – Mr Hulme
50. Super-Curricular Workshop – Brasenose College, Oxford
51. Drama Conservatoire Alumni Session
52. Music Conservatoire Alumni Session
53. Careers in the services – The Police and the Army
54. Apply+ Group: What to do over the summer – IGS Alumni
55. UCAT Preparation Session – Newcastle Uni
56. London: How is it different? – London Interdisciplinary School
57. International Careers in Biomed Research – Dr Bennett, Hacettepe University
58. How to get the best apprenticeship for you – Bradford College
59. NHS Careers Top Tips – IGS Alumni

PLUS 16 independent sessions, 4 career drop-ins, 2 personal statement workshops



# Oxbridge

- 12 Students in 2024
- 57 Students since 2016



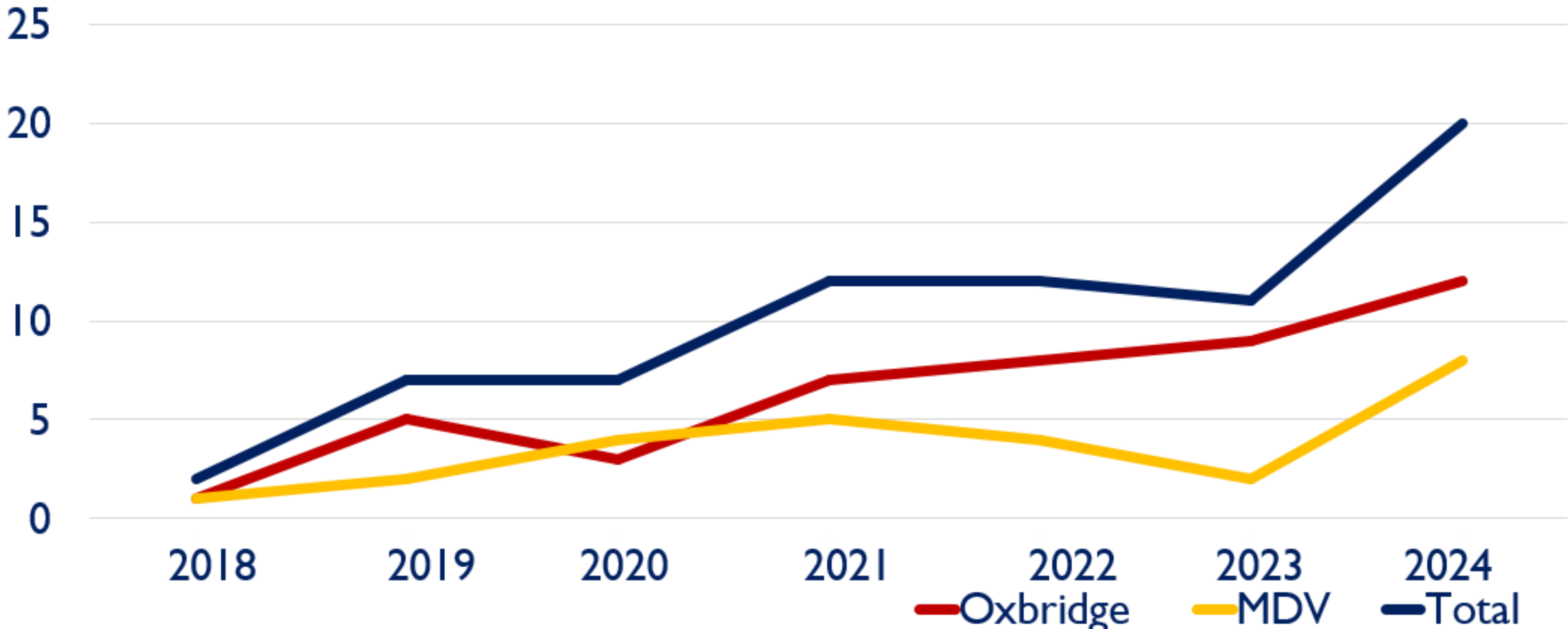
# Medicine, Dentistry and Vet Science

- 7 students in 2024
- 28 since 2016





# Number of Students Achieving Apply+ Destinations



# 52% of UCAS Applicants in 2024 now attend Russell Group universities

## Russell Group Universities



UNIVERSITY OF LEEDS



WARWICK  
THE UNIVERSITY OF WARWICK



The University of  
Nottingham



THE UNIVERSITY  
of EDINBURGH



The  
University  
Of  
Sheffield.



Durham  
University



THE LONDON SCHOOL  
OF ECONOMICS AND  
POLITICAL SCIENCE



UNIVERSITY  
of York



UNIVERSITY OF  
BIRMINGHAM

KING'S  
College  
LONDON

Imperial College  
London

MANCHESTER  
1824

The University of Manchester



UNIVERSITY OF  
CAMBRIDGE



University  
of Glasgow

# 72% of 2024 students now attend University

---

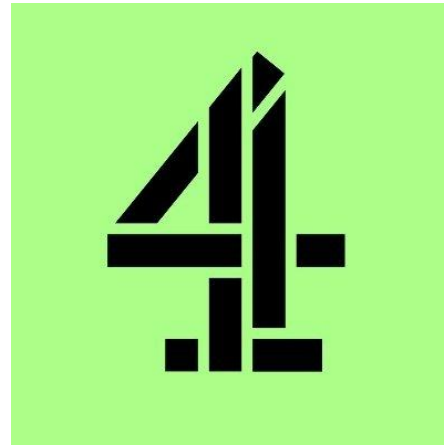


Degree Level Apprenticeships



**accenture**

**Deloitte.**



**mazars**

# IGS Application Timeline 2025 entry

GCSE Results and Post-16  
enrolment 2025

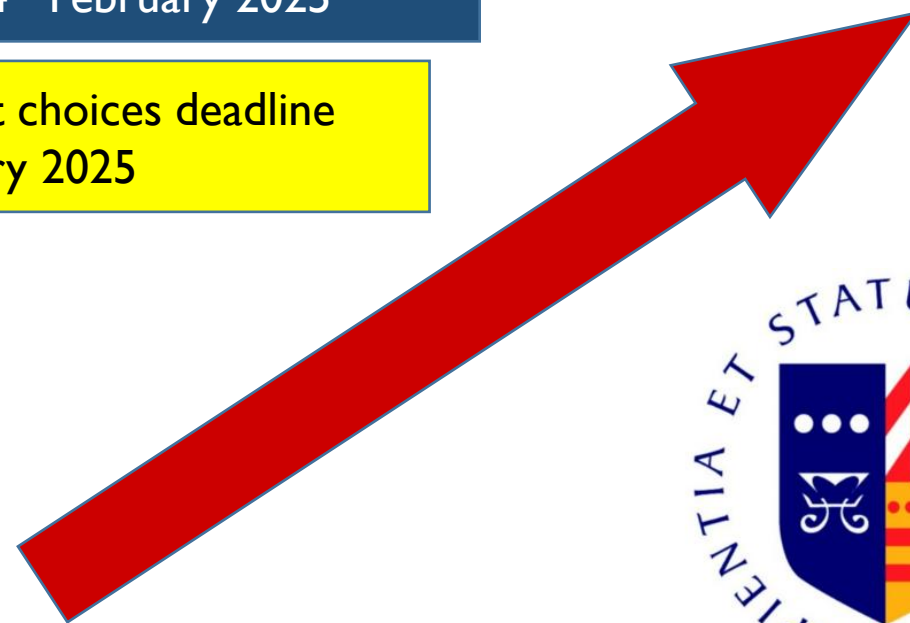
Decision letters received after the  
Easter Holidays 2025

IGS Post-16 Interviews  
12<sup>th</sup> -14<sup>th</sup> February 2025

Application forms & Subject choices deadline  
Friday 4<sup>th</sup> February 2025

IGS Taster Day  
23<sup>rd</sup> January 2025

IGS Open Evening  
Wed 13th November 2024



# How to apply



- New to IGS Students Create an account-  
**Opens November 24**
- Current IGS students an account will be created for you
- Complete your application
- You can edit and revisit whenever you want
- Communicate with us
- Make your taster day choices

# Minibus service from Grassington



- We are offering a morning bus service, based on student interest, from Grassington
- The service currently runs mornings only as students leave school at different times at the end of the day
- It will not be 'free' but any charge will be **very competitive** in comparison with other transport options and will be **more convenient**.
- Some students may be eligible for a bursary to support with travel costs.

Email: [post16@igs.mlt.co.uk](mailto:post16@igs.mlt.co.uk) for more info



# How this evening will work...

- Visit subject areas and speak to staff and students.
- Visit F Hall and the Post-16 café to find out more about the academic support and pastoral care.
- Visit the Armitage Café to find out more about our vision for Personal Development
- All key information is available on the IGS website
- Email any further questions to [Post16@igs.mlt.co.uk](mailto:Post16@igs.mlt.co.uk) we will either
  - respond by email
  - forward your question to an appropriate person
  - arrange a private Teams meeting or a visit.





‘Growing in wisdom and stature’