

Year 6-7 welcome evening



A New School – A New Chapter

- Exciting times ahead: 5-7 years at IGS!
- We want to work positively together – school, parents/carers and students - so that you:
 - ✓ Achieve your Personal Best
 - ✓ Grow in wisdom and in stature
 - ✓ Have opportunities to make a positive difference
 - ✓ Model our school values
 - ✓ Enjoy your time at school, making lasting friendships and happy memories



What does it mean to be a student at IGS?

“Together we achieve our Personal Best”



You Are Part Of A Team and A Wider Community



A tutor group

A band: I, G or S

A year group: The Red Ties

A key stage: Key Stage 3

School: Ilkley Grammar School

A community: Ilkley and the Wharfe Valley



Year 7 Tutor Teams 2024-25

Form Group	Tutor/s	Band	Language
7MTH	Mrs Hunter/Mrs Farrer	I	Spanish
7BGR	Mrs Reid	I	French
7FEN	Miss North	I	Spanish
7JJS	Mr Spencer	I	French
7ACU	Miss Curtis	G	Spanish
7JEF	Mr Farmer	G	French
7GET	Mrs Thompson	G	Spanish
7KMH	Miss Holgate	S	Spanish
7RF	Miss Foster	S	French
7WJ	Mr Javed	S	Spanish
7KL	Mrs Lister	S	French



BE PROUD TO BE AN IGS STUDENT

We are:

- One of the **highest performing state comprehensive schools**
- Rank consistently in the **top comprehensive secondary schools in the north of England** for both GCSE and A-Level
- Judged as **Outstanding** by Ofsted in all categories
- **Have amazing sporting success:** E.g. U13s Bradford Schools Rounders Champions; 4 Yorkshire Gymnastics Champions; last 16 in the national tennis finals of the LTA Glanville Cup; English Schools Fell Running Champions; Girls Football U16s Leeds Cup Winners and League Champions; U14s girls Football runners up in the Leeds Football League and the Leeds Cup; Boys Football U15s runners up Champion of Leeds Trophy and through to the final of the Leeds City Cup ; Boys U12s Boys Football Leeds League Cup finalists; U13s and U15s netball teams placed 4th in the Sisters'n'sport National Bowl; U13A Bradford District Netball Champions and U12 Runners Up; Year 8 Hockey NE and Yorkshire Champions; U15s Boys Hockey – Yorkshire finalists; national cross country finalists including 2nd place in the national senior girls cross country; 3rd place in Yorkshire Schools golf; 1st place in the U15s Girls Cricket 7s Tournament; 2nd and 4th place Bradford Schools Dance Competition; U15 Cricket 1/4 finalists
- One of the **largest and over-subscribed schools in the country** – this means there are lots of opportunities to make new friends and join lots of clubs



Learning at Ilkley Grammar School

What can you expect from your learning at IGS?

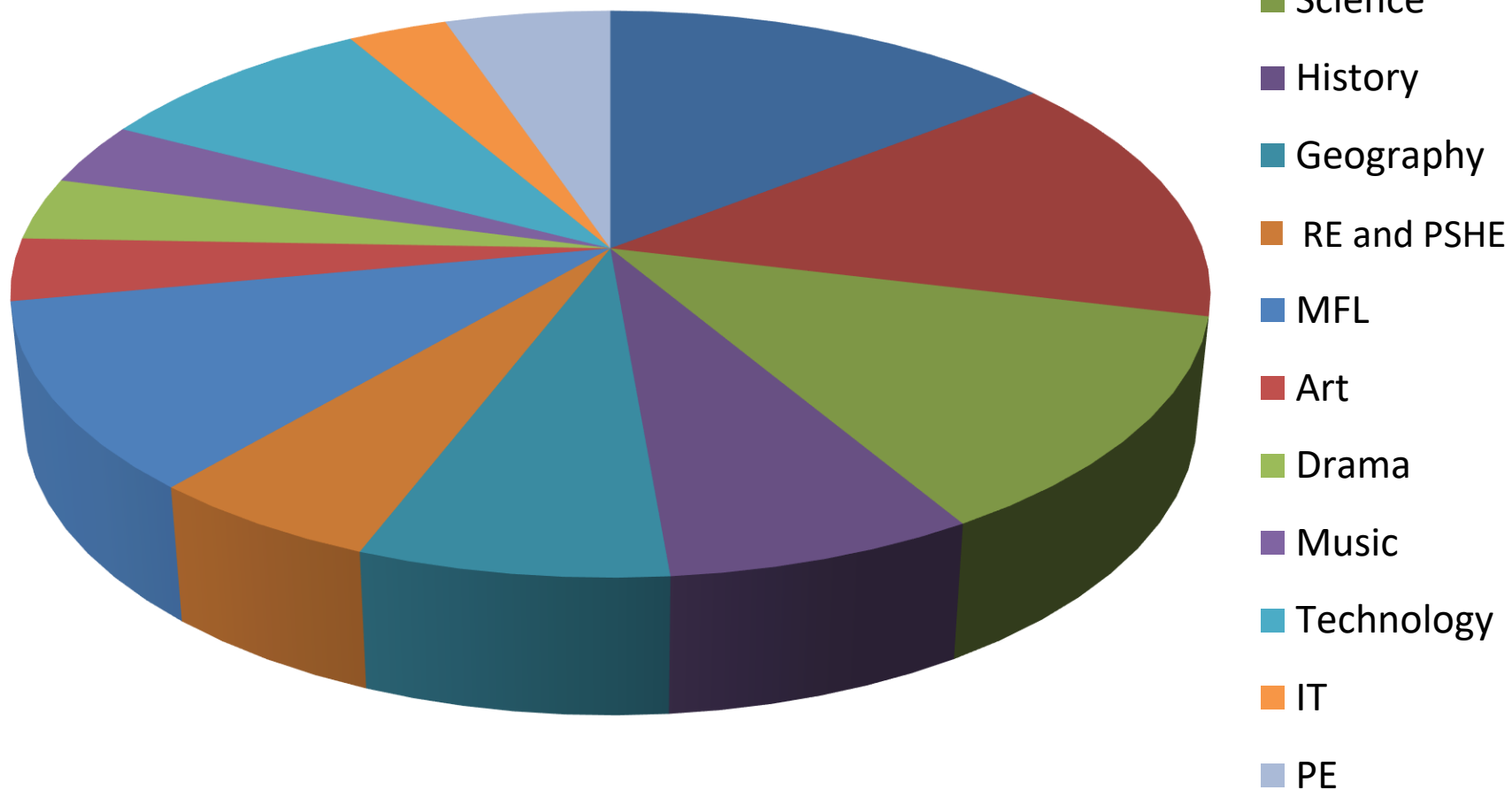


For more information or queries regarding the iPad Scheme please email -

igs2024y7@edenscheme.co.uk



IGS Curriculum Years 7 and 8



School Day

Students are expected to be in **form rooms by 8.25am**

Monday, Tuesday, Thursday, Friday Years 7			Wednesday Years 7		
Time	Activity	Duration	Time	Activity	Duration
8:25-8:40	Tutor Period	15 mins	8:25-9:05	PBT	40 mins
8:40-9:30	Period 1	50 mins	9:05-9:55	Period 1	50 mins
9:30-10:25	Period 2	55 mins	9:55-10:50	Period 2	55 mins
10:25-10:45	BREAK	20 mins	10:50-11:10	BREAK	20 mins
10:45-11:35	Period 3	50 mins	11:10-12:00	Period 3	50 mins
11:35-12:30	Period 4	55 mins	12:00-12:55	Period 4	55 mins
12:30-13:15	LUNCH	45 mins	12:55-13:40	LUNCH	45 mins
13:15-14:05	Period 5	50 mins	13:40-14:35	Period 5	55 mins
14:05-15:00	Period 6	55 mins			



YEAR 7 PASTORAL CARE AT IGS

- Form tutor/s
- Head of Year: **Mrs Hessey**
- Year 7 Student Support and Transition Manager: **Mrs Varley**
- Progress and Experience Leader (PrExL): **Mr Hooper**
- Transition Lead: **Mr Ewbank**
- Assistant Headteacher: Student Experience KS3: **Mr Carr**



Mrs Hessey



Mrs Varley



Mr Hooper



Mr Ewbank



Mr Carr



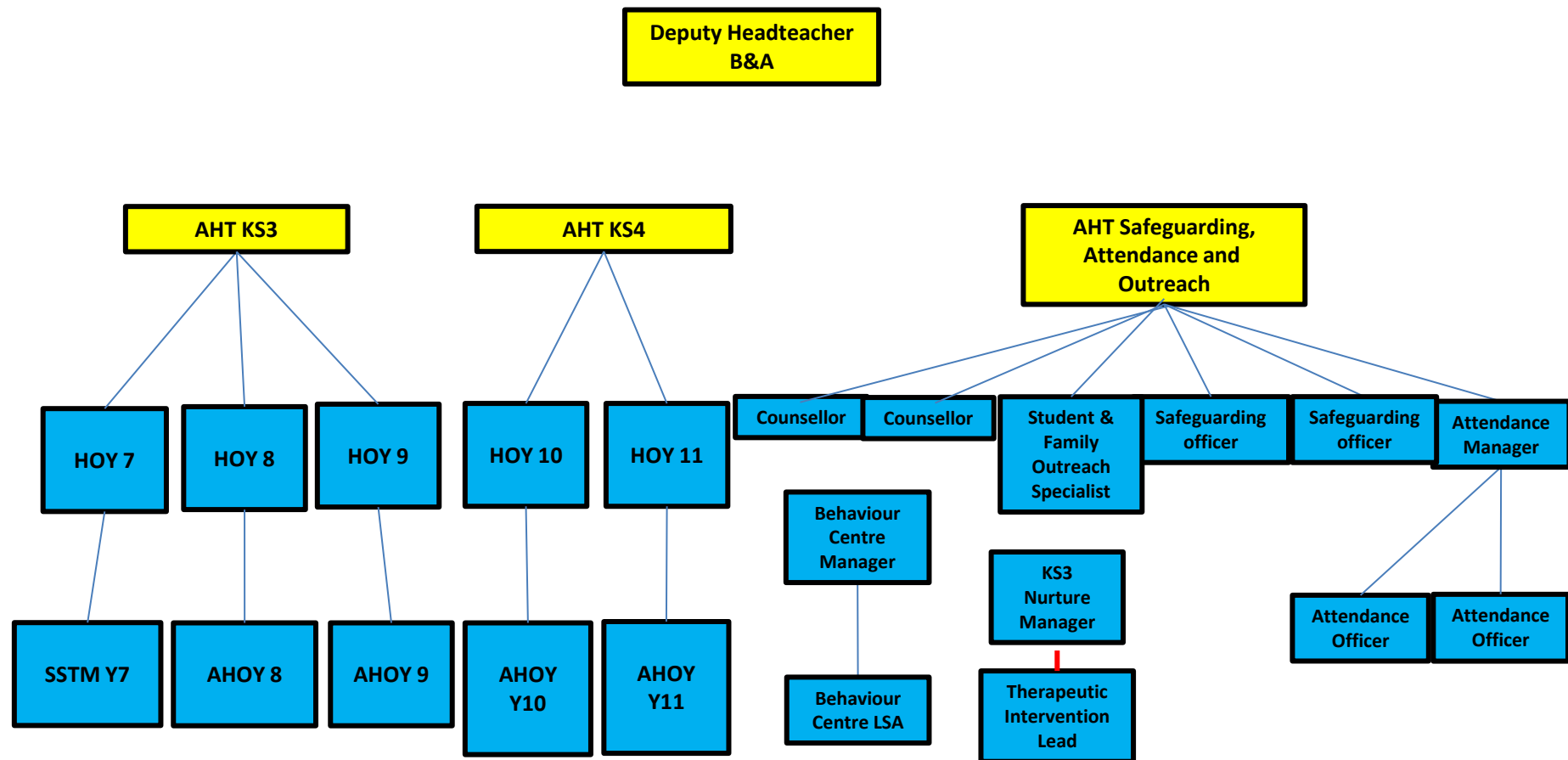
Mr Calvert



Mr Ford

- School counsellor/s
- Inclusive Learning Team
- Safeguarding Officers
- Nurture Lead
- I Leaders
- 100 trained staff mental health first aiders

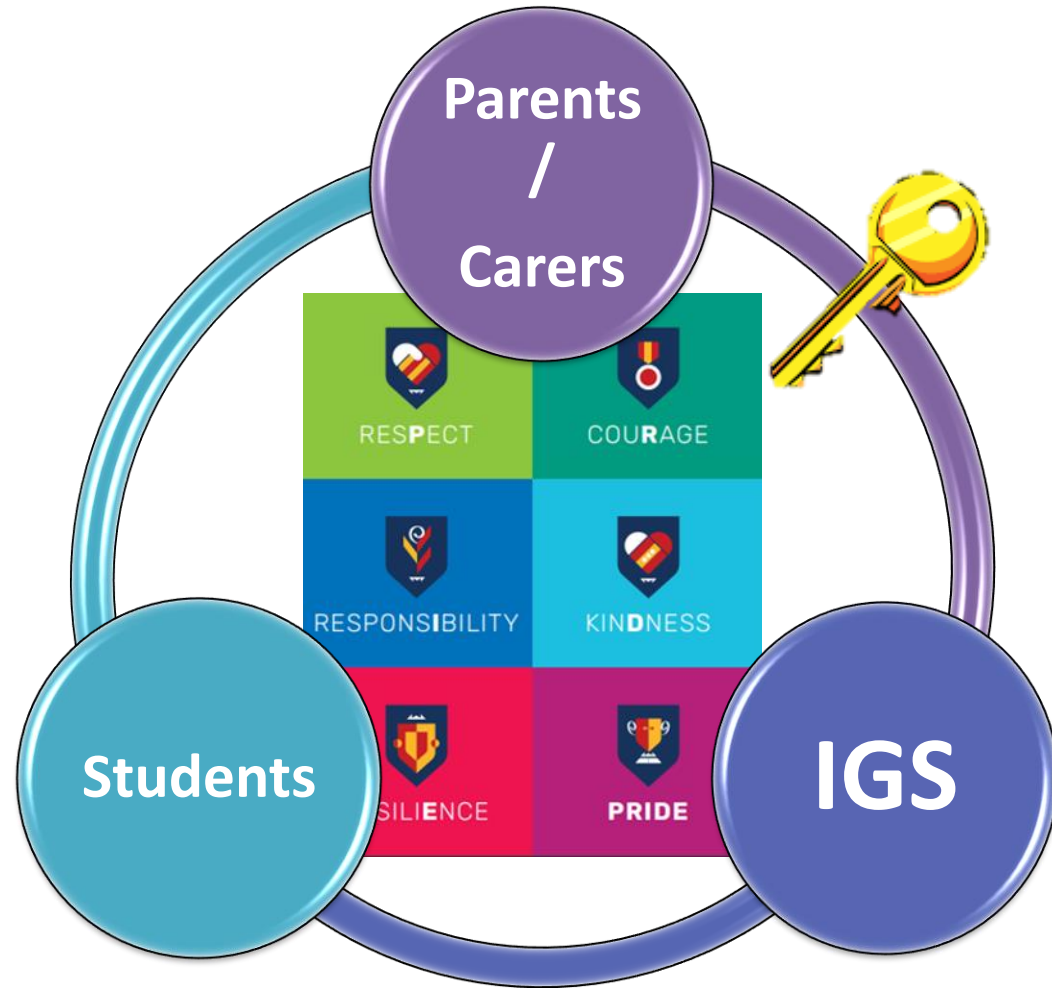




IGS Pastoral Structure (KS3 & 4) 2023/24



The importance of a strong Parent or Carer and School relationship



It can add up to **4 months** of additional progress made (EEF, 2021)



Can significantly increase the attendance of children at school

- **Positive parent and school relationships are associated with better achievement, socioemotional development, behaviour in school (Powell et al, 2010) and longer-term positive benefits (Kreider et al, 2007)**



How you can prepare your child for moving to IGS



- Ensure that you have read and understood the processes and protocols of IGS
- Sit down with your child and ensure that **they understand** the key aspects of moving from Primary School to IGS
- **Practise** certain things that may cause your child anxiety (e.g. Travelling to school, preparing the bag, equipment and uniform each night, reading a timetable, getting up earlier etc)
- Try to digest that there are changes to approaches at secondary school from that of Primary School
- Try to be calm!



Mobile Phones and earphones



- **915** parents and carers contributed to the survey with **68%** in favour of stopping mobile phone usage by students during the school day.
- Phones and headphones will need to be on silent and out of sight from 8:20am-3pm (2.35pm on Wednesdays)
- Some identified students (e.g. those with significant additional needs or those who require support with their mental health) may use safe spaces to use their phones for regulation or support purposes
- Some subjects require the use of phones to support coursework. Use of phones in these subjects will be at the teacher's discretion
- At social times, students may approach members of staff on duty to be able to discretely use their phone for urgent situations
- Phones and headphones will be removed from students by staff and taken to one of 4 secure spaces
- Students using phones or earphones during the school day will receive a 'phone' behaviour point which will be added to Edulink

ATTENDANCE **MATTERS**

IN ONE SCHOOL YEAR

97% = 6
attendance days off
= 30 hours
of learning lost



PUNCTUALITY **MATTERS**

IN ONE SCHOOL YEAR

5 MINUTES
late each day

= 3 days off
in total



EduLink – The Parental Communication Tool



- Emails with login information will be sent out from 12th August
- Please can parents/carers have logged in by **1st September**
- Check student details and medical information as a priority (in preparation for Nell Bank trip in Sept)
- 'One stop shop' – homework, behaviour, achievement, absence reporting etc

Work, work, work? Not at all!

- We very much encourage all students to participate in the wide variety of clubs and opportunities available be they sporting, musical, dramatic or other.
- A full timetable is available in September both for lunchtimes and after school.

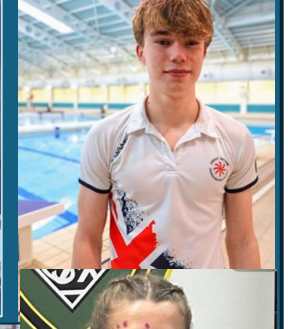


Examples of Extra-Curricular Opportunities

TUESDAY BEFORE SCHOOL			
Music - GCSE Intervention	A & B	C8 & C9	Before school
TUESDAY LUNCHTIME			
Year 12 Collective	Week A	C9	Early lunch
Homework Club	A & B	Week A in Q1, Week B in Q3	Lunchtime
TUESDAY AFTER SCHOOL			
Dance	A & B – terms 1 & 2	B Hall	3.00-4.15pm
Rugby – Boys	A & B – terms 1 & 2	IRUFC	3.30-5.00pm
Netball	A & B – terms 1 & 2	Sports Hall	3.00-4.30pm
Football – Boys	A & B – terms 1 & 2	Playing Fields	3.15-4.30pm
Football – Girls	A & B – terms 1 & 2	3G	3.15-4.30pm
Musical Theatre	A & B – terms 2 & 3*	B7	3.10-4.00pm

WEDNESDAY BEFORE SCHOOL				
Y7 & Y8 Band (Beginner Grade 2)	Week A	CYC	8.20-8.55am	Years 7 & 8
WEDNESDAY LUNCHTIME				
Rock Club	Week A&B - all terms	C8	11.40-12.15pm	Years 7, 8
Senior Orchestra	A & B	C9	Late lunch	Years 9, 10, 11 & 13
French Film Club	A & B – all terms	N2/N3	Lunchtime	All years
Homework Club	A & B	Week A in Q3, Week B in Q4	Lunchtime	Year 7
WEDNESDAY AFTER SCHOOL				
Badminton	A & B – terms 1 & 2	Sports Hall	2.30-3.45pm	Years 7, 8, 9
Rugby - Boys	A & B – terms 1 & 2	IRUFC	3.00-4.30pm	Year 11 & Post 16
IGS Primary Sports League iLeaders	A & B – all terms	Ben Rhydding Playing Fields	3.30-5.15pm	Years 8, 9, 10, 11, 12, 13





A huge well done to all the students who represented IGS as a ball crew member at Ilkley Lawn Tennis and Squash Club

All 84 students did themselves, the school and the local community proud. Thank you!

THE LEXUS
ILKLEY TROPHY
IGS BALL CREW
2024



Creative Arts



The Rotary Young Photographer of the Year Competition: 2023/24



Grease is the Word

Ilkley Grammar School
presents...

5th - 8th February 2024



Logo Created and Designed by Maggie Tait and Harry Bogosian

Presented through special arrangement with and all authorized performance materials are supplied by
Theatrical Rights Worldwide (TRW), www.theatricalrights.co.uk



Charities



**MACMILLAN
CANCER SUPPORT**



Thank You!

Mr Revell: Thank you once again to the marvellous IGS community for their never-ending generosity and kindness on Thursday 21st March. You filled another car full of much needed essential supplies for our local foodbank which included: over 100 Easter eggs, 50 little eggs, and boxes and boxes of core staples that will be vital in supporting the foodbank's clients in the coming weeks and months.

On behalf of the foodbank – thank you!



Trips and visits

- **Enrichment visits** are an important and memorable part of a child's education. They enhance learning, enable students to grow in self-confidence and independence and allow them the chance to show leadership and teamwork skills.
- **Nell Bank visit** – due to take place in the second week of the first term. This is a band based, day visit to our local outdoor education centre. It is aimed at developing new friendships and the identity of each Learning Community. Letters to follow, **costs £19.50**.
- **Challenge and Celebration Week** – This takes place in July – students have a choice of two activity packages.



Trips & Visits



IMPORTANT INFORMATION/REMINDERS

- The new academic year for year 7 starts on **Tuesday 3rd September 2024**.
- You should be on site no later than **8:20am for an 8:25 start**.
- Students will have their catering accounts set up on the first day. We use a cashless system through ParentPay; log-in details will be sent to parent/carers by the end of July.
- We operate a two-week timetable which students will receive on the first day; we start on a week A.

Visit our website for more information or email
transition@ilkleygs.co.uk

NB: The email address is monitored regularly over the summer holidays except weekends, bank holidays and the w/c Monday 22nd July

Members of the Leadership Team are in the Armitage Café this evening

